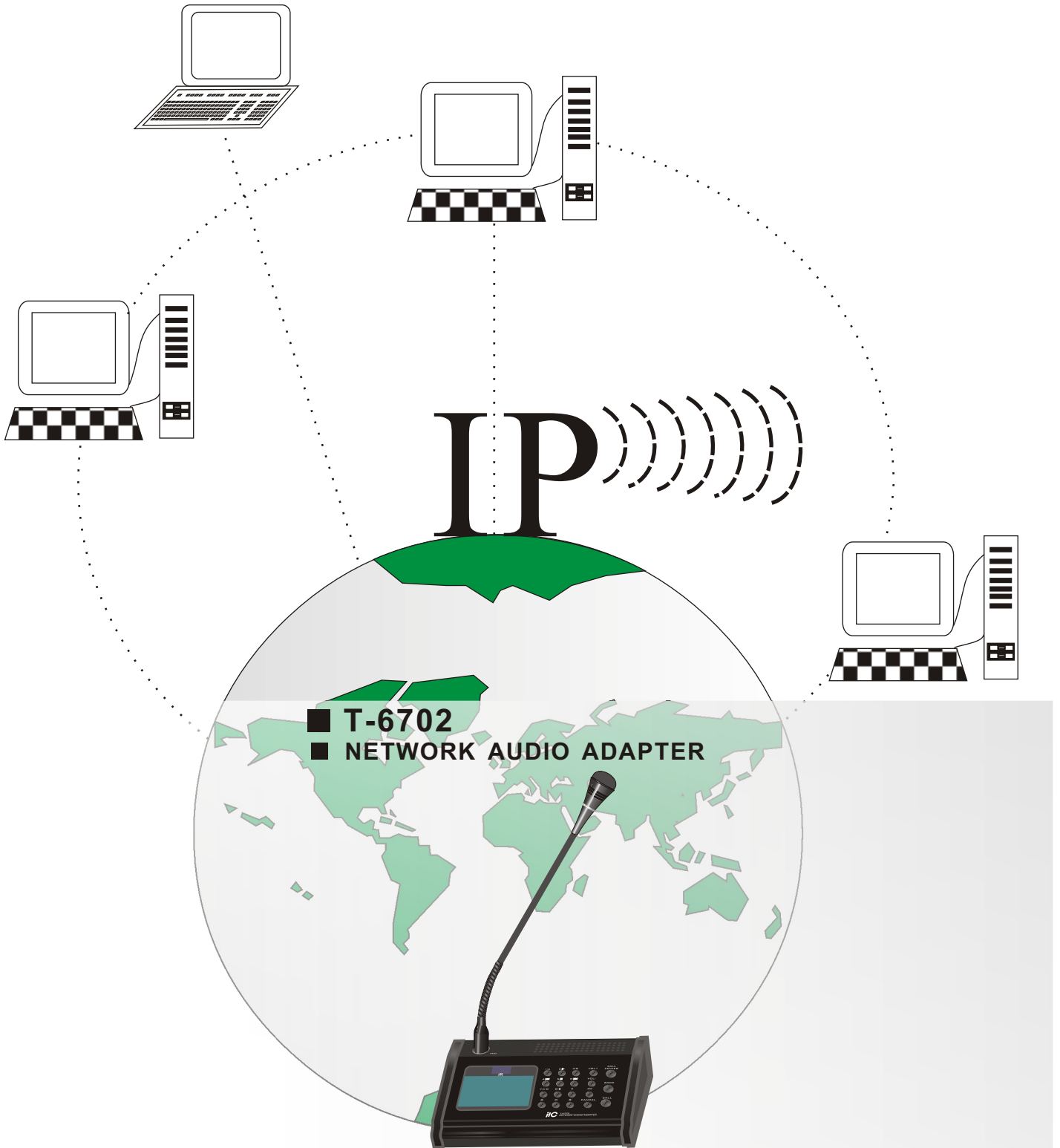


itC **IP NETWORK PA SYSTEM**



OWNER'S MANUAL

Please follow the instructions in this manual to obtain the optimum results from this unit.
We also recommend that you keep this manual handy for future reference.

● Contents ●

1. SAFETY PRECAUTIONS.....	1
2. NOMENCLATURE AND FUNCTIONS	
Front Panel.....	3
Rear Panel.....	4
3. CONNECTION DIAGRAM.....	4
4. OPERATION AND SETTING.....	5
5. SPECIFICATIONS.....	8

1. SAFETY PRECAUTIONS

- Be sure to read the instructions in this section carefully before use.
- Make sure to observe the instructions in this manual as the conventions of safety symbols and messages regarded as very important precautions are included.
- We also recommend you keep this instruction manual handy for future reference.

Safety Symbol and Message Conventions

Safety symbols and messages described below are used in this manual to prevent bodily injury and property damage which could result from mishandling. Before operating your product, read this manual first and understand the safety symbols and messages so you are thoroughly aware of the potential safety



WARNING

Indicates a potentially hazardous situation which, if mishandled, could result in death or serious personal injury.



CAUTION

Indicates a potentially hazardous situation which, if mishandled, could result in moderate or minor personal injury, and/or property damage.



WARNING

When Installing the Unit

- Do not expose the unit to rain or an environment where it may be splashed by water or other liquids, as doing so may result in fire or electric shock.
- Use the unit only with the voltage specified on the unit. Using a voltage higher than that which is specified may result in fire or electric shock.
- Do not cut, kink, otherwise damage nor modify the power supply cord. In addition, avoid using the power cord in close proximity to heaters, and never place heavy objects -- including the unit itself -- on the power cord, as doing so may result in fire or electric shock.
- Be sure to replace the unit's terminal cover after connection completion. Because high voltage is applied to the speaker terminals, never touch these terminals to avoid electric shock.
- Be sure to ground to the safety ground (earth) terminal to avoid electric shock. Never ground to a gas pipe as a catastrophic disaster may result.
- Avoid installing or mounting the unit in unstable locations, such as on a rickety table or a slanted surface. Doing so may result in the unit falling down, causing personal injury and/or property damage.

When the Unit is in Use

- Should the following irregularity be found during use, immediately switch off the power, disconnect the power supply plug from the AC outlet and contact your nearest **ITC** dealer. Make no further attempt to operate the unit in this condition as this may cause fire or electric shock.
 - If you detect smoke or a strange smell coming from the unit.
 - If water or any metallic object gets into the unit
 - If the unit falls, or the unit case breaks
 - If the power supply cord is damaged (exposure of the core, disconnection, etc.)
 - If it is malfunctioning (no tone sounds.)
- To prevent a fire or electric shock, never open nor remove the unit case as there are high voltage components inside the unit. Refer all servicing to your nearest **ITC** dealer.
- Do not place cups, bowls, or other containers of liquid or metallic objects on top of the unit. If they accidentally spill into the unit, this may cause a fire or electric shock.
- Do not insert nor drop metallic objects or flammable materials in the ventilation slots of the unit's cover, as this may result in fire or electric shock.

SAFETY PRECAUTIONS

CAUTION

When Installing the Unit

- Never plug in nor remove the power supply plug with wet hands, as doing so may cause electric shock.
- When unplugging the power supply cord, be sure to grasp the power supply plug; never pull on the cord itself. Operating the unit with a damaged power supply cord may cause a fire or electric shock.
- When moving the unit, be sure to remove its power supply cord from the wall outlet. Moving the unit with the power cord connected to the outlet may cause damage to the power cord, resulting in fire or electric shock. When removing the power cord, be sure to hold its plug to pull.
- Do not block the ventilation slots in the unit's cover. Doing so may cause heat to build up inside the unit and result in fire.
- Avoid installing the unit in humid or dusty locations, in locations exposed to the direct sunlight, near the heaters, or in locations generating sooty smoke or steam as doing otherwise may result in fire or electric shock.

When the Unit is in Use

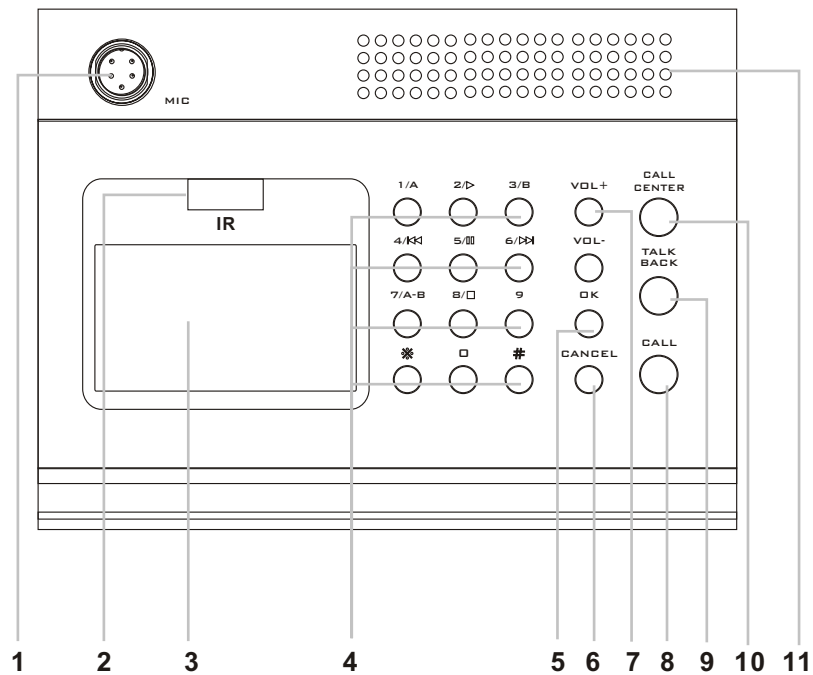
- Do not place heavy objects on the unit as this may cause it to fall or break which may result in personal injury and/or property damage. In addition, the object itself may fall off and cause injury and/or damage.
- Make sure that the volume control is set to minimum position before power is switched on. Loud noise produced at high volume when power is switched on can impair hearing.
- Do not operate the unit for an extended period of time with the sound distorting. This is an indication of a malfunction, which in turn can cause heat to generate and result in a fire.
- Contact your ITC dealer as to the cleaning. If dust is allowed to accumulate in the unit over a long period of time, a fire or damage to the unit may result.
- If dust accumulates on the power supply plug or in the wall AC outlet, a fire may result. Clean it periodically. In addition, insert the plug in the wall outlet securely.
- Switch off the power, and unplug the power supply plug from the AC outlet for safety purposes when cleaning or leaving the unit unused for 10 days or more. Doing otherwise may cause a fire or electric shock.

An all-pole mains switch with a contact separation of at least 3 mm in each pole shall be incorporated in the electrical installation of the building.

Due to product upgrades, while some of the features and specification in the user manual does not match the actual functions, sorry for any inconvenience and thanks for your kind understanding!

2. NOMENCLATURE AND FUNCTIONS

● Front Panel



1. MICROPHONE INPUT

Balanced mic input

2. IR RECEIVER

Receiving IR signal from IR control

3. LCD SCREEN:

4. NUMERIC BUTTONS

5. “CONFIRMATION” KEY

6. “CANCEL” KEY

Cancel the setting or operation
functional button

7. VOL+/VOL KEY

Volume up and volume down functional button

8. CALL

Talk button for announcement

9. TALK BACK

Talk back or intercom communication functional
button

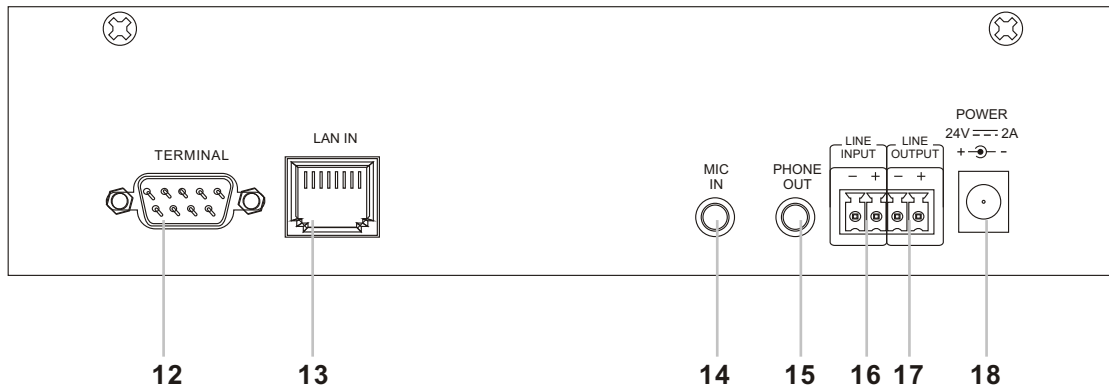
10. CALL CENTER

Swift functional button directly connected with
central control room

11. Monitor speakers

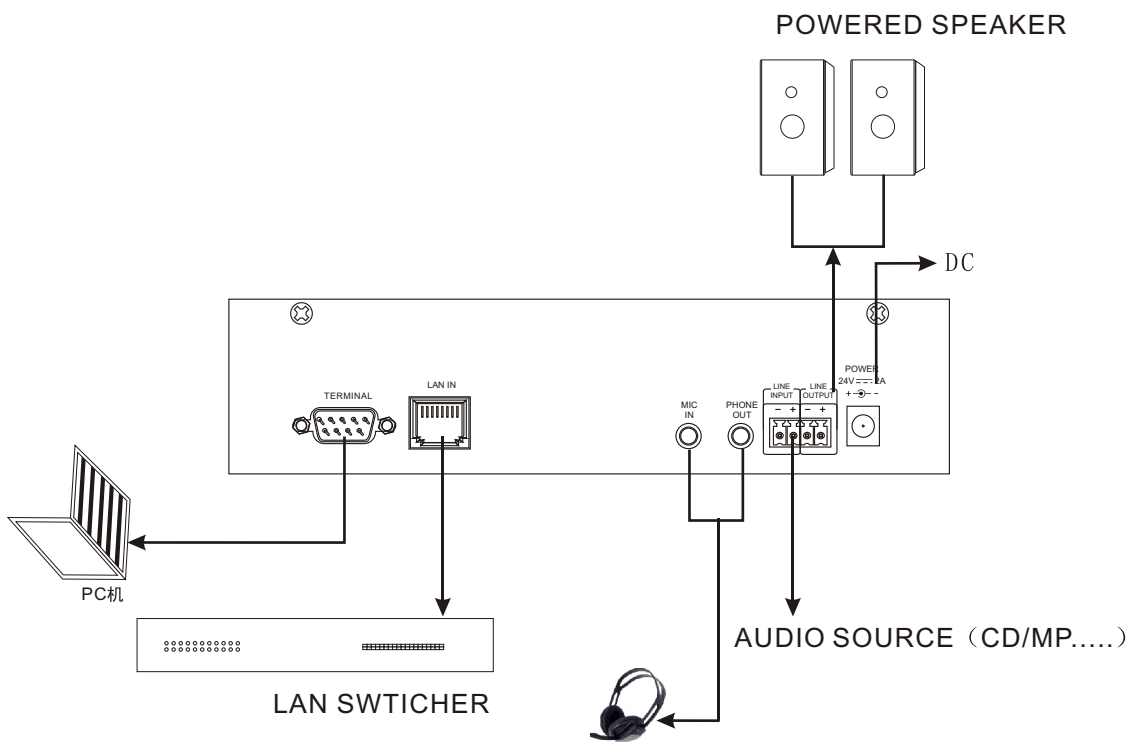
NOMENCLATURE AND FUNCTIONS

● Real Panel



- 12. Reserved port
- 13. Network Interface input
- 14. MIC input jack, microphone When inserting the MIC, the MIC microphone will give priority to the local microphone on the MIC
- 15. Headphone jack, when headphones are plugged in, talk, the listener will not be speaking voice speaker
- 16. line input: line input by phoenix connector, like CD, MP3 input
- 17. line output: line output for extra power amplifier or powered speaker
- 18. DC INPUT: DC 24V power supply

3.CONNECTION DIAGRAM



4. OPERATION AND SETTING

1. Connect well the network paging adapter with software management PC through serial port "TERMINAL" click on the "START" and "ALL PROGRAM" to open the "IP NETWORK PASYSTEM SOFTWARE", select "TERMINAL CONFIGURATION" to pop up the window as picture 1, choose the connection way as "ERIAL PORT-COM 1", then click on "ENQUIRY" button to pop up the dialog box "enquiry is under taken".

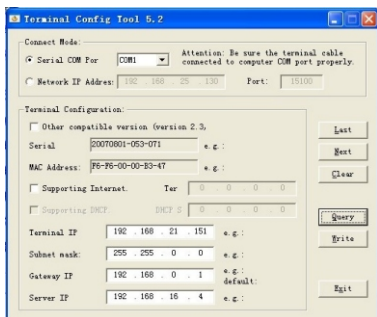


Figure 1.

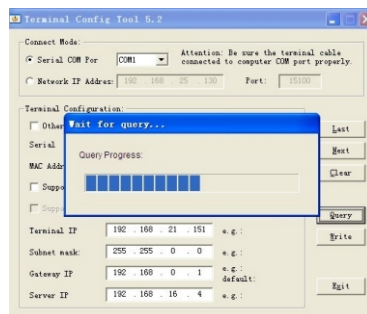


Figure 2. Click "Search"

Query (if configured terminals) is completed, confirm the correct IP address after the IP address bar write to set IP address (such as:192.168.1.100),the dialog box appears as shown in Figure 3. Sure to write the IP address, click "write", write the completeConfirmed that is correct, the dialog box appears as shown in Figure 4 (terminal configuration will automatically obtain the physical address of the MAC).

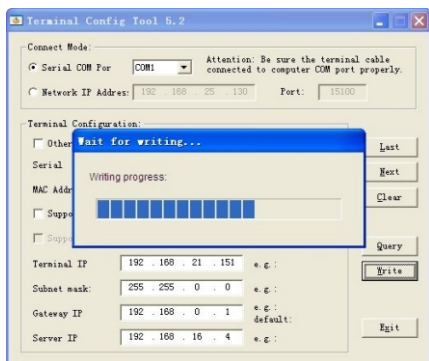


Figure 3

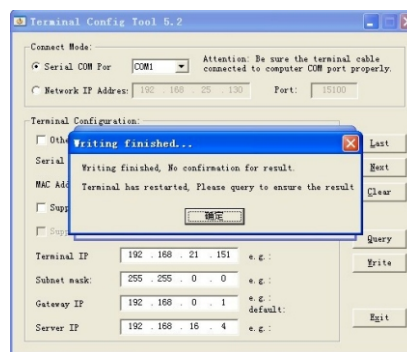


Figure 4

Click "OK", the connection to the network, and write in the address bar bar in Figure 5 the same IP address IP, click "Query."Inquiry is completed, the dialog box appears as shown in Figure 6. The success of the terminal configuration.

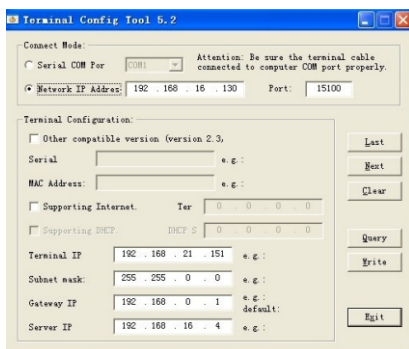


Figure 5

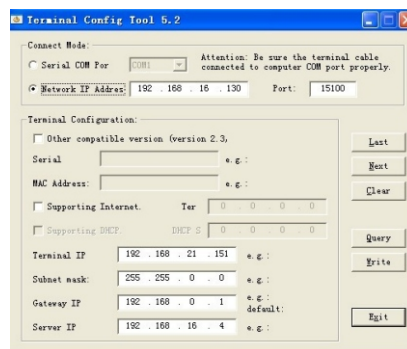
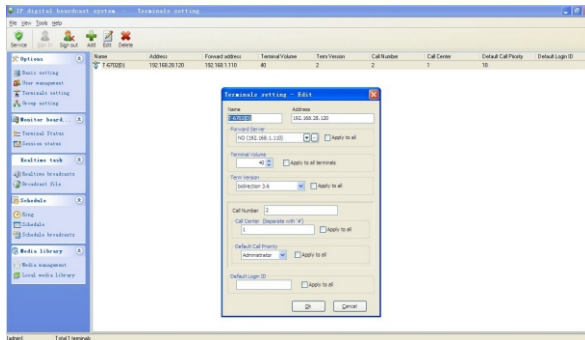


Figure 6

OPERATION AND SETTING

2. IP network broadcast system settings:

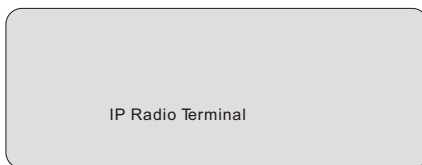
In the "Terminal Configuration", the call to a station IP machine code is set to T-6702 the machine's call center, press T-6702 of the call can be achieved by the piece of dialogue between the two terminals.



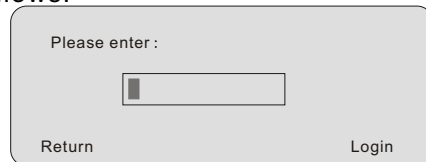
3. LCD menu

Enter the menu interface:

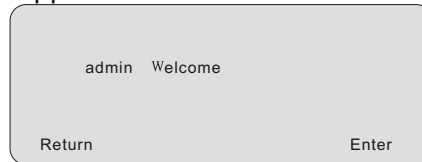
(1) Boot, the screen displays the following:



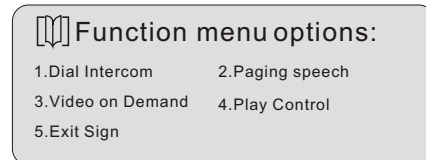
(2) Press the AFFIRM key interface appears as follows:



(3) Enter accession number (host to set a good example: 001) Press AFFIRM key, the following interface appears

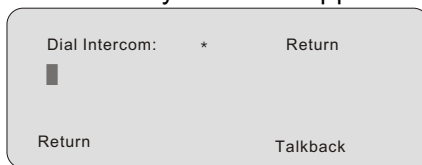


(4) Press AFFIRM key menu interface appears as follows:

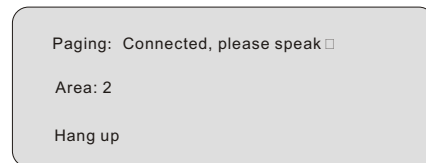


4. Talk-back

(1) Select the menu interface, press the intercom dialing AFFIRM key interface appears as follows:

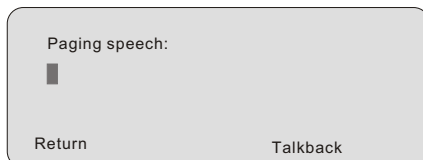


(2) Enter number required intercom terminal (PC software in set good), Then press the AFFIRM key, can be intercom

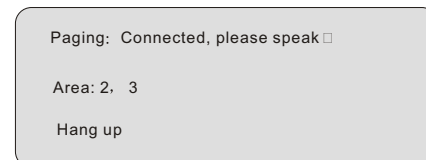


5. Paging speech:

(1) Select the menu interface, press the paging address AFFIRM key interface appears as follows:



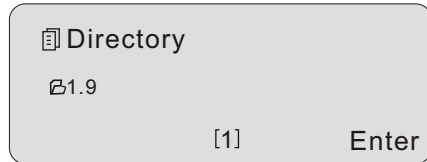
(2) One can enter single or multiple terminals No. Enter multiple time separated with the # key, such as input2, # 3, press the AFFIRM key, can be speech



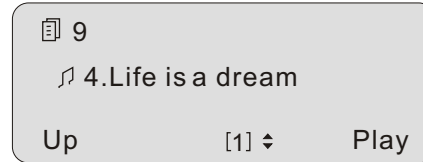
OPERATION AND SETTING

6. Video on Demand:

(1) Select the menu interface, on-demand programming, according to AFFIRM key has the following interface:



(2) Then AFFIRM key interface appears as follows: Use up and down select key to select the folder Any song.

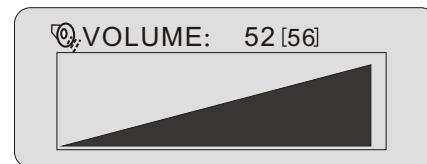


7. Control:

(1) Select the menu interface, playback controls, according to AFFIRM key, as shown below:



(2) Press the volume keys, the following interface, Can adjust the volume.



8. Exit Sign:

Opt-out log menu, press the button to return AFFIRM To boot interface

5. SPECIFICATIONS

Model	T-6702
Network Input	Standard Rj45 input
Protocol Support	TCP/IP,UDP,IGMP (group broadcasting)
Audio Format	MP3/MP2
Sampling Rate	8K~48KHz
Transmit Speed	10M/100M bps
Audio Mode	16 digit stereo CD tone
Frequency Output	20Hz~16 KHz
T.H.D	$\leq 0.3\%$
S.N	$> 70\text{dB}$
Aux Line Voltage Input	350mv Industrial standard screw terminals
Sources Voltage Output	1V Industrial standard screw terminals
Sources Impedance Output	1K Ω
Working Temperature	5 $^{\circ}\text{C}$ ~40 $^{\circ}\text{C}$
Working Humidity	20%~80% Relative humidity, no condensing
Power Consumption	$\leq 10\text{W}$
Power Supply	DC12V
Dimension	200X145X48.5mm
N.W	1.05Kg

INTELLIGETIVE PUBLIC ADDRESS SYSTEM

VersionV0.4

